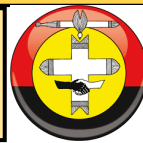


# LISMORE REGIONAL UNITING CHURCH

Includes Bexhill, Coraki, Jiggi, Kyogle, Lismore Worship Centres.  
1 February 2026.



Our vision for *LISMORE REGIONAL UNITING CHURCH* is to  
*transform communities* through Lives being *healed* by  
*Revival of Faith, Renewal of Hope and Restoration of Love.*



## THE PROMISE OF LIGHT

*Jesus said, "I am the light of the world: he that followeth me shall not walk in darkness, but shall have the light of life." - John 8:12 (KJV)*

Dear Friends,

Casting our minds back, like many of you, one of the things I missed most about not worshipping in our beautifully restored church was seeing the glorious hues of the lead-light windows in our sanctuary. What a comforting and glorious sight it is to observe the wonder of the sunlight projecting through the coloured glass on any given day. I don't know about you, but I personally feel uplifted and calmed when bathed in its glow. Much how I feel at those times when bathed in God's glory.

However, there are times when my own outlook is clouded by the condition of the world and the state it's in — the wars, injustice, poverty, crime, prejudice, dishonesty, religious and political differences. So many problems seem to darken the world; many seem to have no solutions. It can be disturbing and almost overwhelming.

The tragic events at Bondi last December took many to a very dark place, but even in the midst of such terror we were reminded of the heroism and selflessness of a number of people innocently caught up in the holocaust of that day. The best and the worst of the human condition on display. We were also reminded of the very reason the organised event took place, Hanukka, an annual Jewish celebration with "light" central to the message of peace, resilience and positivity.

Just as I witness the sun once again shining triumphantly through our stained-glass windows, I take comfort from scripture that assures me of the promise that one day all will be revealed. That peace and harmony will be everlasting. The apostle Paul wrote in 1 Corinthians 13:12 that we are seeing things "through a glass, darkly" but that one day all truth will become clear. Through faith and hope we are able to patiently await the fulfillment of God's promise that one day we will understand and live in God's Holy Light.

### This month's prayer:

*Dear Lord, when we feel overwhelmed by the darkness that invades our world, we thank you for the comforting assurances You give us with Your holy word. We pray that You continue to protect and reassure us and that Your abundant good grace and light continues to bathe us throughout our days. Amen.*

May God's good grace and light bathe you over the coming weeks.

Blessings,

Craig Beck.

**Address:** 80 Keen Street, (PO Box 1132), Lismore NSW 2480. **Phone:** 02 6621 5801  
**email:** lismoreuc@gmail.com **website:** www.lismoreregionalunitingchurch.com

**Ministry Team:** Rev Denise & Rev Jeff Savage, B Perry, D Griffith, V Clapham.

**Office:** Open Mon to Thurs, 9am to 3pm, Ph 6621 5801 **Emergency Phone Number:** 6626 6933

**Red Dove Op Shop:** Open Mon to Fri, 9am to 3pm.

**Facebook - Lismore:** www.facebook.com/LismoreRUC

**Coraki:** www.facebook.com/103100732142570/posts/103105738808736/

**Jiggi:** www.facebook.com/Jiggi-Uniting-Church-223225084926895

# WHAT'S HAPPENING

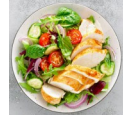
**LISMORE CENTRE OP SHOP—Monday Feb 2:** Cassie Hall, Debbie Polglase, Fay Seiffert.

**Tuesday Feb 3:** Cathy Ruigrok, Dianne Perry, Elaine Virtue.

**Wednesday Feb 4:** Christine McCowan, Jeannie Pearson, Marie Cowin.

**Thursday Feb 5:** Anna Jensen, Cassie Hall. **Friday Feb 6:** Jan Gates, Joyce Perry.

**MONTHLY LUNCH—**First Sunday of the month at Goonellabah Sports Club, 12 noon.



**OFFERINGS—#Direct Deposit—**Please use these details: **Account Name:** Lismore Regional Mission; **BSB:** 634 634; **Acc No:** 1000 30310; **Reference:** Offerings. *We thank you all for your continued generous giving, it is extremely important.*



**MORNING TEA LISMORE—***Please join us for morning tea in the Café space with room to sit and chat. We are thankful that we have some volunteers but we need at least **4 more**, so that volunteers are only needed once a month.* Your help would be greatly appreciated, please see Alan Hoskins.

**Want to know more about your Bible???** Join the KYB group that meets during the school term in a room upstairs in the Uniting Church at **10.00am on Thursdays**. The group restarts on 29 January.

Enquiries: Bronwyn Gray, Ph 0418 119 135.

**KYOGLE UNITING CHURCH—Red Dove Op Shop** is open Wednesday to Friday, 9am to 12.30pm and Saturday, 9am to 12 noon. They are in Bloore Street opposite the Library, with clothing for babies to adults, books and bric-a-brac. Monday mornings, church members and volunteers set up shop for the coming week, Sharon Eaton is the new coordinator. They would be happy for you to come say hello.

**CORAKI UNITING COMMUNITY CHURCH—**Community church services at **9.30am Sundays**.

**JIGGI UNITING CHURCH—**They have a "Pennies from Heaven" repairs fund for the church and are holding a pop-up Op Shop on *3rd Sunday of each month, 10am to 3pm*. If you would like to make a donation—all "pennies" are gratefully received: **Account Name:** Lismore Regional Mission; **BSB:** 634 634; **Acc No:** 1000 29408; **Reference:** "Pennies From Heaven". *This fund will continue to support further projects at the church. For more information check Jiggi Uniting Church facebook page.*

**ITEMS FOR NEWSLETTER—**If there is any information or news you would like to have in the newsletter, please send it to: [lucvolunteers@gmail.com](mailto:lucvolunteers@gmail.com) by *Wednesday each week*

**NEWSLETTER BY EMAIL—**If you have an email account and would like to receive your newsletter by email, please contact [lismoreuc@gmail.com](mailto:lismoreuc@gmail.com) to request the newsletter.

**NOMINATION FORMS—**For election of Church Council and Ministry teams have been emailed out. They are also available at the back of the church. Nominations close on 6 February at 8pm.

**And what does the LORD require of you?**

**To act justly and to love mercy  
and to walk humbly with your God.**

Micah 6: 8b

**CONTACT DETAILS for Rev Denise and Rev Jeff Savage:**

Phone Nos: Denise—0427 647 395, Jeff—0429 728 243

Emails: [DeniseS@nswact.uca.org.au](mailto:DeniseS@nswact.uca.org.au) and [JeffS@nswact.uca.org.au](mailto:JeffS@nswact.uca.org.au)

## LISMORE REGIONAL UNITING CHURCH SERVICES.

**Lismore:** Every Sunday **9am**.

**Bexhill:** Every Sunday **11am**—except 1st Sunday of month.

**Coraki:** Every Sunday **9.30am**.

**Jiggi:** Third Sunday of month **11am**.

**Kyogle:** Every Sunday **9am**.

## REVISED COMMON LECTIONARY.

**1 Feb:**

Mic 6: 1-8

Ps 15

1 Cor 1: 18-31

Mt 5: 1-12

**8 Feb:**

Is 58: 1-9a (9b-12)

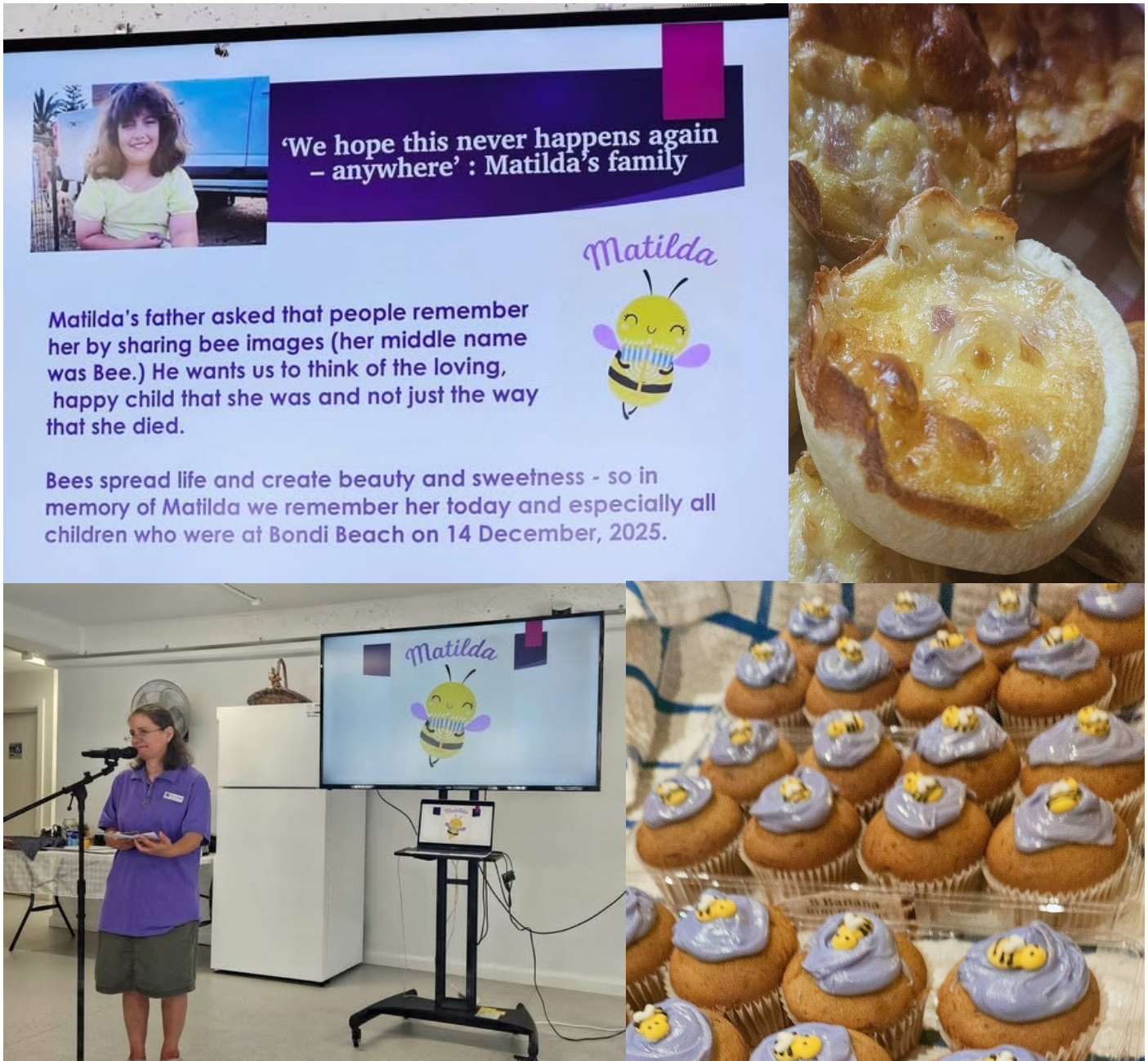
Ps 112: 1-9 (10)

1 Cor 2: 1-12 (13-16)

Mt 5: 13-20



**On Australia Day in Lismore** we switched on the urn, started the fans, sizzled sausages and reignited a longstanding tradition, reintroducing LRUC's once legendary Church Breakfast... for fellowship and to learn and engage with broader community. Yesterday we paused to pray for and honour little Matilda Bee and her family, Walter Mikac and family who founded the Allannah and Madeline Foundation now 25 years ago, and to reflect on the work of CASPA right here in Lismore and Casino, NSW. Our intergenerational theme focussed on organisations working hard to ensure children and young people feel and are safe, protected and valued, wherever they live, learn and play. Even the 40oC heat wasn't an issue for our awesome Lismore congregation members who have long since taken weather extremes in their stride.



We wish to advise that we have raised over \$300 for the Alannah & Madeline Foundation. Thank you to everyone who donated. Your generosity is much appreciated. If people wish to make a further donation you are able to do so through the website: [alannahandmadeline.org.au](http://alannahandmadeline.org.au) and follow the links through to the donation site.



## A Record Day in Jiggi!

Jiggi Uniting Church brought back a longstanding tradition last week after they were approached by local property owner Robert Stavrous and George & Fuhrmann stock and land agents to consider catering for a farm clearance sale in the Jiggi Valley. With advice and encouragement from Bill Webb and experienced Uniting Church ladies as well as many local farmers especially on the favourite sandwiches (corned beef and pickle No.1!), Jiggi team said yes.

As the day got nearer an estimated 80 to 100 attendees grew to be a record 350 to 400 who attended the sale. With the help of the secret Jiggi Baker who creates wonderful treats for Jiggi Church special occasions, the team made 550 cookies and slices, 150 sandwiches and wraps and sold over 200 bottles of water, soft drink and cups of tea and coffee. "It was a sweltering 40oC day but no one lost their cool! We had loads of fun and certainly raised the profile of the Jiggi UC in our community," said congregation member Heather Jeffery.

People spoke to us from far and wide, many reminiscing about family connections with the church or asking about our services today. We had a display of information and historic photographs and sold quite a few booklets on the church's 120 history. It was a great day on so many levels and we are super grateful to Vera xxx and Louise Lancett especially, for their help and guidance."



### February 2026 Preaching Roster Across Lismore Regional Uniting Church

	1 Feb	8 Feb	15 Feb	22 Feb
	Week 1	Week 2	Week 3	Week 4
Kyogle 9am	Jeff	Claire	Denise (HC)	Combined
Lismore 9am	Denise	Jeff (HC)	Jeff/Rob (?)	Worship
Bexhill 11am		Jeff (HC)	Jeff	Lismore
Coraki 9:30 am	Gary – guest	Donna ?	Colin ?	10 am
Jiggi 11am			Barry (HC)	Meeting to follow

\* Denise visiting    \*\* Jeff Visiting

1 Feb – Kyogle Leaders Meeting

14 Feb – Presbytery Gathering

15 Feb - ? Guest from Pres – to do Bexhill also

22 Feb – First Sunday in Lent— Congregational Meeting and Church Council Elections – whole of region gathering in Lismore.

Jeff needs to Jiggi in March!